



淡江大學 112 學年度  
Tamkang University

# 政經系新生手冊

## FRESHMAN HANDBOOK 2023

Global · Politics · Economics



# Great Place to Explore



本系以全人教育為主軸，並以培育具備全球政治經濟的對話能力之人才為方向。

The Department of Global Politics and Economics (GPE) takes holistic education as its main principle, and cultivates talents with the ability to engage in dialogues with global political and economic issues as the direction.

## *Vision*

我們希望學生擁有跨領域多元、連貫與深入的訓練，並扎實政治經濟學的理论基礎，以及國際化的訓練與全球化的認知，培養政治經濟學理分析與實務規劃的能力。

We hope students to have multiple cross-cutting link ups with deep training, developing a strong theoretical foundation in political economy, training in internationalisation and to be endowed with a knowledge of globalisation to strengthen their ability to in political economy analysis.

## *Mission*

創造多元學習新視角以及培育全球化時代的國際政經分析人才

To create a wholly new and multiple learning perspective to cultivate international political and economic analysis talents in the era of globalisation.

## *What is GSIP?*

為了開拓以不同觀點凝視世界，成為真正具有多元世界觀的人，本系推動「全球服務實習計畫」(GSIP)。這個計畫的參與者將在學系的經費支持下，前往亞洲其他國家的非政府公益組織實習，除運用所學之外，並可深入探索不同文化與社會觀點，繪製存於心靈當中的人文地圖。

To explore and look at the world from different perspectives and become a person with a truly diverse world view, the department is home to the **Global Service Internship Program(GSIP)**. Participants will intern in non-governmental organisation in other Asian countries with the financial support of the department. In addition to academic courses, participants will also explore different cultural and social point of views, drawing an all-encompassing humanities map in their hearts.



## I. 系所簡介 ABOUT GPE

師資介紹 Faculty .....	1
--------------------	---

## II. 課程規劃 NAVIGATING CURRICULUM

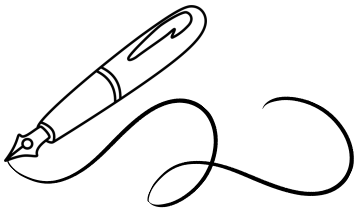
選課指南針 Courses Selection Guidelines .....	4
必修課程 Required Courses .....	7
選修課程 Elective Courses .....	10
體育課程 PE Courses .....	12
英文課程抵免 Waiving English I & English II .....	13
通識核心課程 General Education and Core Courses .....	15
社團學習與實作課程 Learning and Practice of Clubs(K) .....	16
三全教育必修課程 Required Courses of Holistic Education .....	17

## III. 大三出國 JUNIOR ABROAD

留學學校清單 Foreign School List .....	18
大三出國登記流程 Junior Abroad Applying Progress .....	19

## IV. 行政資訊 STUDENT SERVICE&RESOURCES

請假規則 Leave Application .....	20
處室業務介 Offices of TKU .....	23
校園地圖 Campus Map .....	25
行動 Apps Apps You Will Need .....	27
新生重要日程 Events for Freshman .....	28
行事曆 Calendar .....	29



# 師資介紹

# FACULTY

Contents 目錄

About GPE 系所簡介

## 周應龍 **YING-LUNG CHOU**

 [145318@mail.tku.edu.tw](mailto:145318@mail.tku.edu.tw)

副教授兼系主任 Associate Professor and Chairman

- 社會科學研究方法 Social Sciences Research Methods
- 計量研究方法 Statistical Methods in Social Sciences
- 政黨與選舉 Political Parties & Elections
- 調查研究 Survey Research
- 投票行為 Voting Behaviour


## 陳小雀 **LUCÍA HSIAO-CHUAN CHEN**

 [lucychen@mail.tku.edu.tw](mailto:lucychen@mail.tku.edu.tw)

教授兼國際事務副校長 Professor and Vice President for International Affairs

- 拉美文化研究 Latin American Cultural Studies
- 拉美文學研究 Latin American Literary Studies
- 拉美本土化研究 Studies on Latin American Indigenism
- 古巴研究 Cuban Studies


## 包正豪 **CHENG-HAO PAO**

 [129456@mail.tku.edu.tw](mailto:129456@mail.tku.edu.tw)

教授兼國際事務學院院長 Professor, Dean of College of International Affairs

- 選舉研究 Election Study
- 民主化理論 Democratisation Theory
- 原住民政治行為研究 Indigenous Political Behaviour
- 政黨研究 Political Party Study
- 應用統計 Applied Statistics

## 胡慶山 **SAMUEL CHING-SHAN HU**


 [112525@mail.tku.edu.tw](mailto:112525@mail.tku.edu.tw)

教授 Professor

- 日本法學 Science of Japanese Law
- 比較憲法 Comparative Constitution
- 國際人權法 International Human Rights Law



## 蔡錫勳 HSI-HSUN TSAI

 [114550@mail.tku.edu.tw](mailto:114550@mail.tku.edu.tw)

教授 Professor

- 經營戰略 Operations Strategy
- 日本大戰略 Japan Grand Strategy

## REINHARD BIEDERMANN 雷納德

 [134230@mail.tku.edu.tw](mailto:134230@mail.tku.edu.tw)

教授 Professor

- 私部門治理與企業社會責任 Private Governance & Corporate Social Responsibility
- 國際貿易 International Trade
- 主權與全球化 Sovereignty and Globalisation
- 歐盟與中國的政治關係 Politics Relations between the EU & China
- 跨國治理與台灣 Transnational Governance and Taiwan
- 全球原料鬥爭與外交 Global raw materials conflicts and diplomacy

## 宮國威 EMILIO KWO-WEI KUNG

 [merkosur@yahoo.com.tw](mailto:merkosur@yahoo.com.tw)

副教授 Associate Professor

- 拉美經濟整合 Economic Integration of Latin America
- 拉美對外經貿關係 Latin America's Foreign Economic and Trade Relations

## KOYAMA NAONORI 小山直則

 [naonorikoyama@yahoo.co.jp](mailto:naonorikoyama@yahoo.co.jp)

副教授 Associate Professor

- 日本經貿 Japanese Economics and Trade
- 理論經濟學 Theoretical Economics
- 國際經濟學 International Economics
- 貿易政策 Commercial Policy
- 環境經濟學 Environmental Economics

## ANNA RUDAKOWSKA 安娜

 [142036@mail.tku.edu.tw](mailto:142036@mail.tku.edu.tw)

副教授 Associate Professor

- 國際關係 International Relations
- 政治經濟 Political Economy
- 歐盟外交政策 EU Foreign Policy
- 歐盟與中國/台灣關係 EU's Relations with China & Taiwan
- 歐洲 Europe
- 言談分析 Discourse Analysis
- 亞太與其他區域政治 Asia-Pacific and Regionalism



黃富娟 **FLORENCIA FU-CHUAN HUANG**  [florihuang@gmail.com](mailto:florihuang@gmail.com)

副教授 Associate Professor

- 比較發展研究 Comparative Development Studies
- 政治經濟學 Political Economy
- 經濟社會學 Economic Sociology
- 國家社會學 National Sociology
- 比較/歷史社會學 Comparative/Historical Sociology


**KAR YEN LEONG** 梁家恩

 [146802@mail.tku.edu.tw](mailto:146802@mail.tku.edu.tw)

副教授 Associate Professor

- 政治理論 Political Theory
- 東南亞研究 Southeast Asian Studies
- 人權 Human Rights
- 文化研究 Cultural Studies
- 歷史研究 Historical Studies


林偉修 **WEI-HSIU LIN**

 [148660@mail.tku.edu.tw](mailto:148660@mail.tku.edu.tw)

副教授 Associate Professor

- 國際政治經濟學 International Political Economy
- 政治經濟學 Political Economy
- 經濟發展 Economic Development
- 發展經濟學 Development Economics
- 國際金融政治 International Finance Politics
- 量化研究 Quantitative Research


徐宏馨 **HONG-HSIN HSU**

 [niensheng2008@gmail.com](mailto:niensheng2008@gmail.com)

助理教授 Assistant Professor

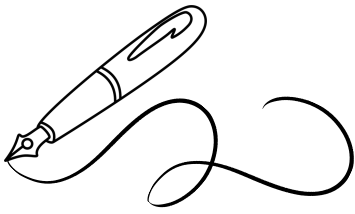
- 日本政治 Politics of Japan
- 日本外交 Foreign Relations of Japan

何景榮 **KIM YUNG KENG**

 [157400@mail.tku.edu.tw](mailto:157400@mail.tku.edu.tw)

助理教授 Assistant Professor

- 移民研究 Immigration Studies
- 印尼文 Indonesian
- 社會階級 Social Class
- 國際政治經濟學 International Political Economy
- 台灣政治發展 Political Development of Taiwan
- 東南亞電子商務 Southeast Asia E-Commerce
- 東南亞政府與政治 Government & Politics in Southeast Asia



# 選課指南針

## COURSES SELECTION GUIDELINES



3個在淡江大學選課時必備的網站

3 necessary websites to know when signing up your classes.



### 課程查詢系統 Course Catalogs

查詢每學期開課情況、模擬排課表

The system for open-classes inquiry of every semester & scheduled your class timetable previously.

<https://azquery.tku.edu.tw/acad/>



### 網路選課系統

### Curriculum Online System

填入課程查詢系統顯示的開課序號（4位數字）完成選課、加退選

Fill in the control number (4 digits) shown in the Course Catalogs to add and drop courses.

<https://www.ais.tku.edu.tw/ElECos/login.aspx>



### 通識核心課程選填登記系統

### Register Core Curriculum

登記順序和篩選結果無關，不需要搶課

The order of registration has **NOTHING** to do with the screening results.

[https://www.ais.tku.edu.tw/COS\\_LOT](https://www.ais.tku.edu.tw/COS_LOT)



# 選課指南針



## 課程查詢系統



- 由於本系是全英語學士班，課程必須皆是全英語授課才能承認為畢業學分。
- 點選 二、課程類別=> 外語授課=> 全英語授課，即可查詢學期所有全英語授課課程。
- 網站上方「我的課表」為此系統的模擬排課表功能，僅供學生排課參考，正式選課請依各年級開放時間進入選課系統始生效。

學期	課程序號	課程名稱	學分	授課語言	備註
1	4010	簡報技巧	3	全英語授課	
1	4011	國際政治專業英文	3	全英語授課	
1	4012	國際政治專業英文	3	全英語授課	

- 選擇在科目名稱後有標示「◇全英語授課」的課程
- 以 <簡報技巧> 這堂課為例，左邊藍色的四位數字是開課序號（4010），之後在選課時需填入網路選課系統來完成選課。

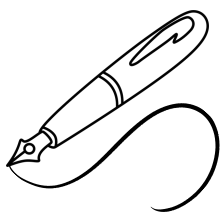
	1	<a href="#">4010</a>
	1	<a href="#">4011</a>
	1	<a href="#">4012</a>

- 想要新增課程到模擬課表需按下「年級」左邊的「選擇」即可。[4010](#)為已加入到模擬課表的課程（人形圖案），[4011](#)和 [4012](#)為尚未加入的課程（鉛筆圖案）。

	4010簡報技巧 T310
	4010簡報技巧 T310
	4037國際政治專業英文 H117
	4037國際政治專業英文 H117

- 按下 X 即可刪除不需要或是衝堂的課程。衝堂時表格會呈現紅色。





# COURSES SELECTION GUIDELINES

## Course Catalogs



- Since GPE is an English-Taught program, all courses MUST be instructed in English in order to be recognised as graduation credits.
- Click II. Category => Courses Instructed in Foreign Languages => Course Instructed in English, to check all courses instructed in all English of the semester.
- Click "My School Timetable" at the top of the webpage would show you the simulated class timetable. It is not responsible for the course enrolment but only for the help with the ease of arranging individual's school timetable. Course enrolment is available according to the registration calendar in which appointment times differ across .

Department: T2128 - DEPARTMENT OF GLOBAL STUDIES / ECONOMICS (ENGLISH TAUGHT PROGRAM)												
1	4010	A121	0	A	0	2	PRESENTATION SKILLS	Course instructed in all English	101 (200)	謝世明 (50****) SHEU WILIAM YANN	Mon 16:30-18:00	
1	4011	8000	0	A	0	3	PRINCIPLES OF ECONOMICS	Course instructed in all English	91 (12)	謝世明 (50****) SHEU WILIAM YANN	Thu 16:30-18:00	Wed: 3:00-5:00
1	4012	8401	0	A	0	1	AI AND PROGRAMMING LANGUAGE	Currently Full. Work 10 or Work 18. Students are required to choose the assigned class sections. Attention: This Course is Course instructed in all English		王麗華 (10****) WANG LEE HUA	Thu 16:30-18:00	

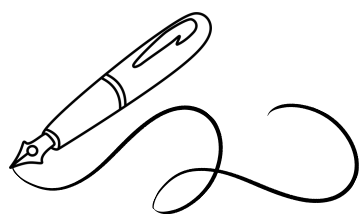
- Choose courses marked with "◇ Course instructed in all English" after the courses name
- Take the course <PRESENTATION SKILLS> as an example. The blue 4 digits on the left are the control number (4010). You will need to fill the numbers in the Curriculum Online System to complete the course selection.

	1	<a href="#">4010</a>
	1	<a href="#">4011</a>
	1	<a href="#">4012</a>

- If you want to add a course to the simulation timetable, you need to press "Select" to the left of "Grade". [4010](#) is a course that has been added to the simulation timetable (human-shaped pattern), and [4011](#) and [4012](#) are courses that have not yet been added (pencil pattern).

<del>X</del> 4010PRESENTATION SKILLS T310
<del>X</del> 4010PRESENTATION SKILLS T310
<del>X</del> 4037ENGLISH ON INTERNATIONAL POLITICS H117
<del>X</del> 4037ENGLISH ON INTERNATIONAL POLITICS H117

- Press X to delete unwanted or overlapping courses. The table will be red when courses overlap.



# 必修課程

# REQUIRED COURSES

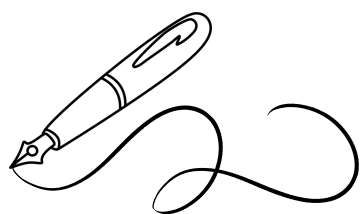
\*課程必須是全英語授課以獲得畢業學分

\*Must choose course instructed in all English

淡江大學全球政治經濟學系全英語學士班 112 學年度入學新生起必修科目表

科目名稱	學分數	第1學年	第2學年	第3學年	第4學年	第5學年	備註
		上	下	上	下	上	
基本課程 12學分	外國語文學門(Q) Foreign Language	2	2	2	2		大1英文必修、大2外文自由選
	中國語文能力表達 Ability of Expressing in Spoken and Written Chinese		2				語文表達
	大學學習 Learning in University	1					學習與發展學門(N)
	社團學習與實作(K) Learning and Practice of Club *三全教育學生請另詢所屬學系	1		1			1.課外活動與團隊發展。 2.團隊發展承認為課外活動與團隊發展必修1學分。
通識核心課程 14學分	AI 與程式語言 AI and Programming Language	1	1				
	探索永續 Exploring Sustainability	1	1				
	文學經典學門(L) Classics in World Literature	2					人文領域 至少2學分
	歷史與文化學門(P) History and Culture	2					
	哲學與宗教學門(V) Philosophy and Religion	2					
	藝術欣賞與創作學門(M) Arts Appreciation and Invention	2					
	全球視野學門(T) Global Outlook *三全教育學生請另詢所屬學系	2					社會領域 至少2學分
	未來學學門(R) Futures Studies	2					
	社會分析學門(W) Social Analysis *三全教育學生請另詢所屬學系	2					
	公民社會及參與學門(S) Civil Society and Participation	2					科學領域 至少2學分
資訊教育學門(O) Information & Computer Education *商管學院學生請另詢所屬學系	2						
全球科技革命學門(Z) Global Technology Revolution	2						
自然科學學門(U) Natural Sciences	2						
其他課程	體育 Physical Education	0	0	0	0	0	
	全民國防教育軍事訓練(一)、全民國防教育軍事訓練(一)/護理(一) All-Out Defense Education Military Training and Nursing	0	0	0			

1. 每學門多修2科4分。社會議題暨承社析必學2分。3. 國習為視門必學2分。



# 必修課程

# REQUIRED COURSES

### 淡江大學全球政治經濟學系全英語學士班 112 學年度入學新生起必修科目表

科 目 名 稱	學分數	第 1 年	第 2 年	第 3 年	第 4 年	第 5 年	備 註
		上	下	上	下	上	
院共同課程 多元文化議題初探 Exploring Multicultural Issues	2		2				
校園與社區服務學習 Campus and Community Service-Learning	0	0	0				
社會議題探索暨實踐 Exploring and Implementing Social Issues	2	1	1				屬三全教育共同必修科目。承認為通識核心課程中之社會分析學門，2 學分。承認對象僅限三全教育學生。
國際學習 Study Abroad and International Learning	2			2			屬三全教育共同必修科目。承認為通識核心課程中之全球視野學門，2 學分。承認對象僅限三全教育學生。
團隊發展 Team Development	1				0	1	屬三全教育共同必修科目。承認為基本知能課程中之課外活動與團隊發展，學年課，上學期 0 學分，下學期 1 學分。承認對象僅限三全教育學生。
經濟學原理 Principles of Economics	3	3					
政治學（一） Politics I	2	2					
統計學（一） Statistics I	2	2					
政治學（二） Politics II	2		2				
統計學（二） Statistics II	2		2				
全球化概論 Introduction to Globalization	2	2					
國際關係 International Relations	3	3					
國際法概論 Introduction to International Law	3		3				
社會學 Sociology	3		3				
政治經濟學 Political Economy	3			3			
質性研究方法 Qualitative Research Methods	3			3			

Contents

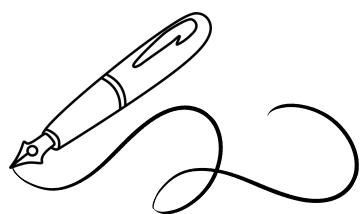
目錄

About GPA

系所簡介

Navigating Curriculum

課程規劃



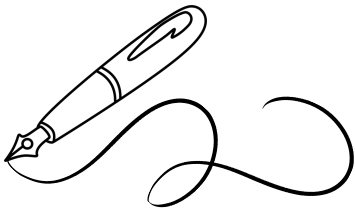
# 必修課程

# REQUIRED COURSES

淡江大學全球政治經濟學系全英語學士班 112 學年度入學新生起必修科目表

科目名稱	學分數	第 1 年		第 2 年		第 3 年		第 4 年		第 5 年		備註
		上	下	上	下	上	下	上	下	上	下	
國際政治經濟學 International Political Economy	3				3							
量化研究方法 Quantitative Research Methods	3				3							
大三出國 Junior Abroad	0							0				畢業門檻，依規定大三至合作姊妹校留學一年，完成修課要求，即可通過。
政治哲學 Political Philosophy	3							3				

- 必修科目總學分數：65學分 (含通識教育課程 26 學分，院共同科課程 2 學分)  
Required Courses Credits : 65 credits  
(include Core Curriculum 26 credits , 2 credits of college common courses)
- 選修科目總學分數：63學分 \*最低應修本系32學分的選修科目  
Elective Courses Credits : 63 credits \*A minimum of 32 credits from GPE's Elective Courses
- 畢業總學分數：128學分  
Total Graduation Credits : 128 credits



# 選修課程

## ELECTIVE COURSES

### 通用課程 Academic Skill Courses

---

#### 2學分 / 2 credits

- 統計軟體應用 Applied Statistical Softwares
- 簡報技巧 Presentation Skill
- 學術專業寫作 Academic Writing

### 台灣與世界的連結 Taiwan studies & its Global Connection

---

#### 2學分 / 2 credits

- 台灣經濟發展 Taiwan's Economic Development
- 台灣政治發展 Taiwan's Political Development
- 全球經濟議題 Global Economic Issues
- 公衆外交 Public Diplomacy
- 選舉與投票行爲 Elections and Voting Behavior
- 全球在地化實作專題（一）Seminar on Glocal Action Practice I
- 全球在地化實作專題（二）Seminar on Glocal Action Practice II
- 兩岸關係 Cross-Strait Relations

#### 3學分 / 3 credits

- 比較政治 3學分 Comparative Politics

### 進階經濟理論 Advanced Economic Theories

---

#### 2學分 / 2 credits

- 西方政治經濟史 Western European Political Economic History
- 政治經濟學名著選讀 Selected Readings on Political Economy

#### 3學分 / 3 credits

- 個體經濟學 Intermediate Microeconomics
- 總體經濟學 Intermediate Macroeconomics



# 國際經濟實務 International Economy

## 2學分 / 2 credits

- 國際金融 International Finance
- 國際貿易 International Trade
- 國際就業市場 International Job Market
- 全球新創產業與電子商務 Global Startups & E-commerce Industries

## 3學分 / 3 credits

- 全球貨幣與外匯市場 Global Currency & Foreign Exchange Markets

# 人權與全球化 Human Rights and Globalization

## 2學分 / 2 credits

- 全球化與反全球化 Globalization and Anti-Globalization
- 全球人權發展 Global Human Rights Development
- 發展社會學與全球化 Sociology of Development and Globalization
- 全球人權發展 Global Human Rights Development
- 轉型正義 Transitional Justice

# 國際關係與全球議題 International Relations & Global Issues

## 2學分 / 2 credits

- 國際安全 International Security
- 國際合作 International Cooperation
- 全球環境政治 Global Environment Politics
- 國際危機管理 International Crisis Management

## 3學分 / 3 credits

- 國際組織 International Organizations

# 東南亞研究 Southeast Asia Studies

## 2學分 / 2 credits

- 東南亞社會與政治 Societies & Politics of Southeast Asia
- 印尼社會經濟文化專題 Seminar on Indonesia's Economy, Culture and Society
- 越南社會經濟文化專題 Seminar on Vietnam's Economy, Culture and Society
- 馬來西亞社會經濟文化專題 Seminar on Malaysia's Economy, Culture and Society
- 東南亞國族主義 Nationalism in Southeast Asia
- 東南亞區域主義 Regionalism in Southeast Asia



## 歐洲研究 European Studies

2學分 / 2 credits

- 歐盟對外關係 EU External Relations
- 歐盟跨國治理 EU Transnational Governance
- 歐盟政經發展 EU Political And Economic Development

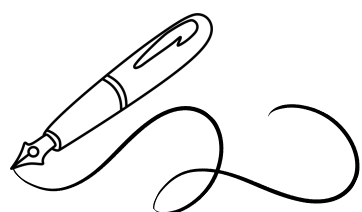
## 美洲研究 American Studies

2學分 / 2 credits

- 美國外交政策 American Foreign Policies

\*實際開課情況請查看 課程查詢系統-AZURE Please check the system for actual course information :

<https://azquery.tku.edu.tw/acad/>



## 體育課程

## PE COURSES

\*課程必須是全英語授課以獲得畢業學分

*\*Must choose course instructed in all English*

大一至大二每學期均必修體育(共四次)。每學期每週授課 2 小時，修畢規定年限，成績及格者始得畢業。

- 一年級體育課: 上學期體育課為隨班上課，由教務處統一代選。下學期體育課為興趣選項，同學須自行網路選課。
- 二年級體育課: 二年級體育課為全學年課程，下學期系統會自動轉檔。

1. PE is a compulsory course for freshmen and sophomores every semester(4 classes in total). It is 2 hours a week in each semester and is required as graduation credits.

- Freshman Year: PE class is taken through the school system in the first semester. Students must choose your own favourite PE class in the second semester online.
- Sophomore Year: PE course becomes a full-year course. Once you choose a class in the first semester, the system will automatically set your choice in the second semester.



# 英文課程抵免

本校新生(英文系除外)得於入學當學期**開學後二週內**至「[淡江大學學分抵免作業系統](#)」提出申請並繳交入學前取得之相關證明文件至英文系，審核通過者可抵免英文(一)、英文(二)課程，申請條件說明如下(詳細規定請至英文系網頁查詢):

## 一、抵免英文(一)、英文(二)

- 1.日間部大一新生學測英文 15 級分或指考英文成績為大考中心成績前 5%。
- 2.全民英檢(GEPT)中高級複試以上。
- 3.多益測驗(TOEIC) 800 分以上。
- 4.托福網路測驗(TOEFL iBT) 85 分以上。
- 5.國際英語測驗(IELTS) 6.5 級以上。
- 6.劍橋大學英語能力認證分級測驗(Cambridge Main Suite) Certificate in Advanced English (CAE)以上。
- 7.劍橋大學國際商務英語能力測驗(BULATS) ALTE Level 4 以上。
- 8.境外生、駐外人員子女，得持相關英文程度證明文件提出申請。

## 二、抵免英文(一)

- 1.日間部大一新生學測英文 14 級分或指考英文成績為大考中心成績前 10%。
- 2.全民英檢(GEPT)中高級初試以上。
- 3.多益測驗(TOEIC) 750 分以上。
- 4.托福網路測驗(TOEFL iBT) 80 分以上。
- 5.國際英語測驗(IELTS) 6 級以上。
- 6.劍橋大學英語能力認證分級測驗(Cambridge Main Suite) First Certificate in English (FCE)以上。
- 7.劍橋大學國際商務英語能力測驗(BULATS) ALTE Level 3 以上。

上列核准抵免英文(一)、英文(二)課程者，可計入畢業學分數內。

\*詳情請見英文系網站 - 系統操作手冊：

<https://www.tfx.tku.edu.tw/storage/app/media/English/Ellen/1171%20操作手冊-中文版.pdf>

\*更多問題請詢問英文系辦、註冊組





# WAIVING ENGLISH I & ENGLISH II

All freshmen in TKU(**NOT** including the freshman of Department of English) can apply to waive English(I) and English(II) in the **first two weeks** of semester. Students can prepare related certificates documents to upload to [ [TKU Governing the Transfer of Credits Online System](#) ]. (Please visit the website of the English Department for detailed regulations)

## I. Waiving English(I) and English(II)

- i. GEPT High-Intermediate second stage
- ii. TOEIC 800
- iii. TOEFL iBT 85
- iv. IELTS 6.5
- v. Cambridge Main Suite - Certificate in Advanced English (CAE)
- vi. BULATS - ALTE Level 4
- vii. Overseas students and expat children should provide related certificates documents to apply for waiving.

## II. Waiving English(I)

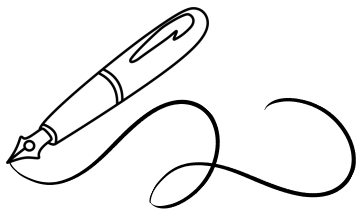
- i. GEPT High-Intermediate first stage
- ii. TOEIC 750
- iii. TOFEL iBT 80
- iv. IELTS 6.0
- v. Cambridge Main Suite First Certificate in English (FCE)
- vi. BULATS ALTE Level 3

**Approved credits for English(I) and English(II) listed above can be included in the graduation credits.**

\*English Instructions of Credits System:

<https://www.tfx.tku.edu.tw/storage/app/media/English/Ellen/1171%20操作手冊-English.pdf>

\*Further information please contact Office of Department of English or Office of Academic Affairs-Registration Section



# 通識核心課程

## GENERAL EDUCATION AND CORE COURSES

$$14 = (1+1) + 12$$

**14** | 通識核心課程**14** 學分  
To complete Core Curriculum requirements a total of **14** credits is needed

**1+1** | 111學年度起增加大一必修 **AI與程式語言(1學分)** 及 **探索永續(1學分)**  
Since 2022 academic year, courses of **AI and Programming Language (1credit)** + **Exploring Sustainability (1 credit)** are required.

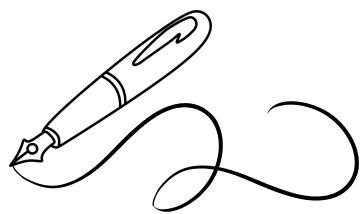
**12** | 剩餘**12**學分學生自主選課，需全英語授課。三領域至少各2學分。  
The remaining **12** credits are needed to select by your own at the every beginning of semester, and all course are taught by English. At least two credits in each of the three curriculum courses are needed.

 人文領域 **HUMANITY**

 社會領域 **SOCIETY & CULTURE**

 科學領域 **SCIENCE INQUIRY**

\*各領域需至少修滿2學分，學生需自行上網登記選課。  
\*Each curriculum requires a minimum of two credits. Students are required to choose their own courses online by themselves.



# 社團學習與實作課程

## LEARNING & PRACTICE OF CLUBS(K)

### A 入門課程 **COURSE**

修課外活動與團隊發展（修習「團隊發展」就不用上社團，抵免課外活動，承認K學分）

Take Extracurricular Activities and Team-ship Development (If you study "Team Development", you don't need to go to club activities, extracurricular activities are exempted, and K credits are recognized)

### B 活動參與 **PARTICIPATE**

完成同一學期參與同一社團組織活動至少三次，每次填寫活動日誌經社團組織認證，再由課外活動輔導組審核通過。

Participate in three events/activities that are held by the **same club** in one semester.

### C 活動執行 **EXECUTE**

完成舉辦社團組織活動至少一次，經社團組織認證，再由課外活動輔導組審核通過。

Execute at least one event/activity in any club in TKU.

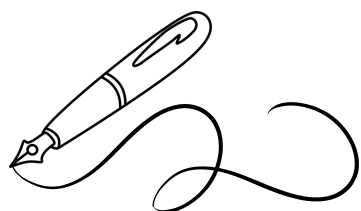
\*(B)(C) are allowed to be done in the same semester. However, one event/activity only served either (B) or (C).

Students **CANNOT** fill (B) or (C) certification for one event.

\* Get 1 credit by completing Learning and Practice of Clubs.

\*修習三全教育課程—團隊發展者無需遵從以上流程，只需完成團隊發展課程即可獲得1學分。

\*Students who take the course 'Team Development' do **NOT** need to complete the progress above. You will get 1 credit as you finish Team Development course.



# 三全教育必修課程

## REQUIRED COURSES OF HOLISTIC EDUCATION

科目名稱	年級	必選修	學分數	備註
社會議題探索暨實踐	一	必	上1・下1	承認為社會分析學門(W群)
國際學習	二	必	上2	承認為全球視野學門(T群)
團隊發展	四	必	上0・下1	承認為課外活動與團隊發展學門(K群)

Course Title	Grade	Required/Selective Course	Credits	Remarks
Exploring and Implementing Social Issues	Freshman	Required	1 <sup>st</sup> semester: 1	Recognized as a social analysis course (W group)
			2 <sup>nd</sup> semester: 1	
International Learning	Sophomore	Required	1 <sup>st</sup> semester: 2	Recognized as a Global Perspectives course (Group T)
Team Development	Senior	Required	1 <sup>st</sup> semester: 0	Recognized as an extracurricular activity and team development course (K group)
			2 <sup>nd</sup> semester: 1	



### 通識核心課程 General Education and Core Courses

共計4學分 4 credits in total

- 社會分析學門(W) | 大一學年修習 Freshman Year
  - 社會議題探索與實踐 Exploring and Implementing Social Issues
- 全球視野學門(T) | 大二上修習 First Semester of Sophomore Year
  - 國際學習 Study Abroad and International Learning



### 基本知能課程 Fundamental Courses

共計1學分 1 credit in total

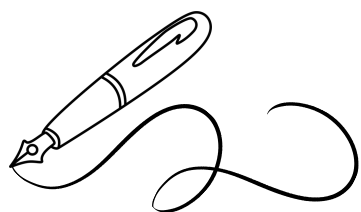
- 社團學習與實作(K) | 大四修習 Senior Year
  - 團隊發展 Team Development

\*以上三種課程為三全教育必修課程，適用於本國籍學生。學生不得以其他課程代替此三種課程中的任何一項，否則無法取得畢業所需學分。

\*Those three required courses of Holistic Education are for native students. Native students should NOT choose any other classes to replace.

\*Foreign students are not restricted by these three required courses, they can choose to take these three courses, or unselect them and use the following alternatives:

1. For “Exploring and Implementing Social Issues”, you can choose other English-taught courses of Social Analysis (W) to substitute.
2. For “International Learning”, you can choose other English-taught courses of Global Vision (T) if you’re not going abroad in junior year.
3. For “Team Development”, you can choose to participate in clubs and obtain the certification of club learning and practice (K) as a substitute.



# 留學學校清單

## FOREIGN SCHOOL LIST

	Countries 國家	Universities 學校
1	U.K. 英國	University of Sunderland 桑德蘭大學
2	U.S.A 美國	California State University, Long Beach 加州州立大學 長堤分校大學
3	U.S.A 美國	San Francisco State University 舊金山州立大學
4	U.S.A 美國	Indiana University of Pennsylvania 賓州印第安那大學
5	U.S.A 美國	State University of New York at Cortland 紐約州立大學 科特蘭分校
6	U.S.A 美國	Sam Houston State University 薩姆休斯頓州立大學
7	Australia 澳洲	The University of Queensland 昆士蘭大學
8	Czech Republic 捷克	Charles University in Prague 查爾斯大學
9	Poland 波蘭	University of Warsaw 華沙大學
10	Poland 波蘭	Maria Curie-Skłodowska University of Lublin 居禮夫人大學

\*學校亦提供交換學生名額，詳情請上交換生計畫網站查詢：

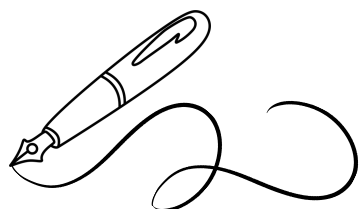
\*The school also offers exchange students places, for further info. please check on:  
[http://www.oieie.tku.edu.tw/zh\\_tw/students/learning1/plane1](http://www.oieie.tku.edu.tw/zh_tw/students/learning1/plane1)

Contents 目錄

About GPE 系所簡介

Navigating Curriculum 課程規劃

Junior Abroad 大三出國



# 大三出國登記流程

## Junior Abroad Applying Progress

大一  
Freshman

準備、報考托福/雅思 (應在暑假期間完成)  
Prepare for TOEFL/IELTS (should be done at the end of summer vacation)

大二  
Sophomore

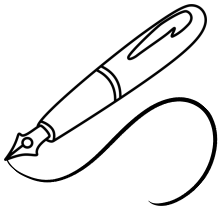
搜集資料、10月開始登記大三出國學校、預選大三課程、申請交換生  
Collect information of school you want / Register for study abroad school starts in October / Pre-selection junior course / Apply for exchange student

大三  
Junior

定期通報、與導師聯繫、留學學分採認  
Contact with junior mentor regularly / Credit acceptance

學分採認需有國外學校正式成績單，以及所修課程之課程大綱。若預計修習國外課程採認為本系必修課程學分，請於國外學校選課前與本系該必修課之授課老師聯絡，取得其同意才可以採認該課程。

For credit recognition, official transcripts from foreign schools are required, as well as the syllabus of the courses taken. If you plan to take foreign courses as credits for the required courses of the department, please contact the teacher of the required course in the department before choosing courses in foreign schools, and obtain their consent before the course can be accepted.



# 請假規則

請假仍依請假規則辦理，步驟說明如下：

(一) 線上填寫請假單，事假、公假及喪假於請假日前上線填寫，病假及防疫假別於請假日結束五日內上線填寫。

(二) 將假單印出，備妥相關證明文件，逕送核假權責師長核章後，送商管大樓聯合服務櫃台 **B418** 辦理。

(三) 自行列印請假證明聯（可於個人電腦端列印），送交授課教師。

一、申請各類假別之規定摘錄簡述如下（詳細條文請查閱請假規則）：

(一) 公假：須事先辦理（防疫假別除外），並檢附相關證明或有關單位簽證。

(二) 事假：須事先辦理，二日以上者，須檢附家長或監護人及其他有力證明；本人結婚者，給予事假一週。

(三) 病假：二日以上者須檢附本校校醫證明或健保特約醫院（診所）之診斷證明書。

(四) 喪假：學生直系親屬死亡給假七日，兄弟姊妹給假三日，均須檢附「死亡證明」或相關文件辦理，並以關係人死亡之日起，六十日內可分次申請，如需續假或其他旁系親屬死亡時，則以事假論。

二、准假之權責，規定如下：

(一) 一日以內：事、病假由個人提出申請後逕行由學生請假系統核准，其餘假別由系教官核准。

(二) 二至三日：由系教官核准。

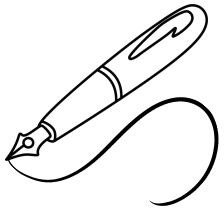
(三) 四至五日：經系教官簽證，由生活輔導組組長核准。

(四) 六至十四日：經系教官、導師（導師請假時，得由系主任代理）、生活輔導組組長簽證後，由學生事務長核准。

(五) 十五日以上：經系教官、導師、系主任、生活輔導組組長、學生事務長簽證後，由行政副校長核准。

考試期間確因下列特殊情形應檢附各項規定證件，該科考試結束三日內（得以郵戳為憑）辦理請假手續，請假單須先經任課老師簽可（任課老師為兼任者，或專任老師請假時，得由發聘系所主任代理），系教官、生活輔導組組長、教務處簽證後，由學生事務長核准，逾期一律不予補請假，補考期間一律不准請假。

\*請假系統網站：<https://leave.sis.tku.edu.tw>



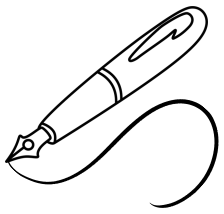
# LEAVE APPLICATION

To apply for leave, students must fill in a leave (application) form on the website of the TKU Guidance Section, Office of Student Affairs. They should print out the completed form and carry out the leave application procedures in accordance with related regulations. Then, within five days of the scheduled leave, they must hand in the approved leave application form to each of their course instructors for future reference. (Not including regular holidays)

Regulations for applying for each category of leave are outlined below:

- a) Official leave (for work purposes): must first be applied for by submitting related documentary proof or signed approval from the department / office concerned.
- b) Personal leave: requires application in advance. Those who apply for two days or more of personal leave must submit documents of proof, such as proof of parenthood, legal guardianship, or other such legally valid documents. Applicants will receive one week of personal leave for marriage.
- c) Sick leave: those who apply for two or more days of sick leave must submit a TKU doctor's certificate or a certificate of diagnosis from an NHI-participating hospital or clinic.
- d) Bereavement leave: students will receive bereavement leave of 7 days for the death of either a parent(s) or a child / children; 3 days for the death of a brother or sister. When applying, the applicant must submit documentary proof of relation to the deceased or other related documents and, within 60 days of the date on which the family member(s) died, may apply to take portions of the leave on separate occasions. If there is a need to extend the period of leave or the death is not in the immediate family, the student must instead use Personal Leave.





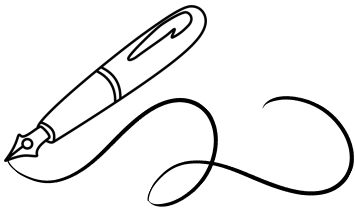
# LEAVE APPLICATION

The departments / offices responsible for authorizing applications for leave are outlined below:

- a) Leave of one day or less: personal or sick leave applications should be submitted to the TKU Guidance Section. Applications for all other forms of leave should be sent to the military instructors in the applicant's department for approval.
- b) Leave of two to three days: must be authorized by military instructors from the applicant's department.
- c) Leave of four to five days: requires signed permission from department military instructors and approval by the Section Chief of the TKU Guidance Section.
- d) Leave of six to 14 days: requires signed permission from department military instructors, counselors (or department chairs if the counselor is on leave), and the Section Chief of the TKU Guidance Section; as well as approval from the Dean of Student Affairs.
- e) Leave of over 15 days: requires, firstly, the signed permission of department military instructors, counselors, department chairs, the Section Chief of the TKU Guidance Section, and the Dean of Student Affairs; and then approval from the Vice President of Administrative Affairs.
- f) After gaining the required approval, the application forms (from the Tamsui and Taipei Campuses) should be sent to the TKU Guidance Section and stamped with a seal of authorization.

If, during examinations, students need to take leave due to circumstances listed below, they must submit related documents of proof – as stipulated below – and lodge the application for leave no longer than three days after the examination (the stamp on the application form will serve as proof of the date of application). Applicants need to first gain permission from the course instructor (or from the chair of the hiring department if the instructor is a part-time teacher or is a full-time teacher on leave), a department military instructor, the Section Chief of the TKU Guidance Section, and the Office of Academic Affairs. After doing so, they must then gain the approval of the Dean of Student Affairs. If applicants do not lodge their application within the given time constraints, they will not be allowed to take a make-up test. During the make-up test, students are not permitted to apply again for leave.

\*Leave Application System: <https://leave.sis.tku.edu.tw>



# 處室業務簡介

## OFFICE OF TKU



### 政經系辦公室 OFFICE OF GPE

- 驚聲大樓 T1105 Ching-sheng Memorial Hall, room T1105 (Ext.3663)
- 政經系全英語學士班業務 Department of Global Politics and Economics, English-taught program Affairs
- 學系助理 Department Assistant : 林宜陵 Yi-Ling Lin (Emma)
- Email : 137368@mail.tku.edu.tw



### 教務處 OFFICE OF ACADEMIC AFFAIRS

- 行政大樓 A212 Administration Building, A212 room (Ext. 2018, 2201, 2250)

#### 註冊組 REGISTRATION SECTION

- 申請/補發學生證、在學證明、成績單、辦理修/退學等  
Applying for student ID cards, transcripts, or certificates, and applying to defer or discontinue studies.

#### 課務組 CURRICULUM SECTION

- 課程加退選、學分抵免  
Adding or dropping courses, and credit transferring.





## 學務處 OFFICE OF STUDENT AFFAIRS

### 生輔組 GUIDANCE SECTION

- 商管大樓 B402 Business Building, B402 room (Ext.2217, 2817, 2214)
- 校內外各類獎助學金、兵役、請假、就學貸款申請、校內工讀申請  
Academic leave, students' group insurance, free legal advice, applying part-time jobs at school, and scholarships.

### 課外組 EXTRACURRICULAR ACTIVITIES GUIDANCE SECTION

- 紹謨紀念體育館 SG315  
Shao-Mo Memorial Gymnasium, SG315 room (Ext. 2220, 2224, 2226)
- 社團活動、社團實習與實作課程  
Students Club, Club Learning and Practicing

### 住輔組 STUDENT HOUSING GUIDANCE SECTION

- 淡江國際學園 X103 (Ext.3477, 3476, 3405) ; 淡江國際學園宿舍專線 (02)2621-6911 (Ext.0214, 0216, 0218)  
Tamkang International Dormitory, X103 room (Ext. 3477, 3476, 3405) ; (02) 2621-6911 (Ext.0214, 0216, 0218)

## 國際處 OFFICE OF INTERNATIONAL AFFAIRS

### 交流組 INTERNATIONAL EXCHANGE SECTION

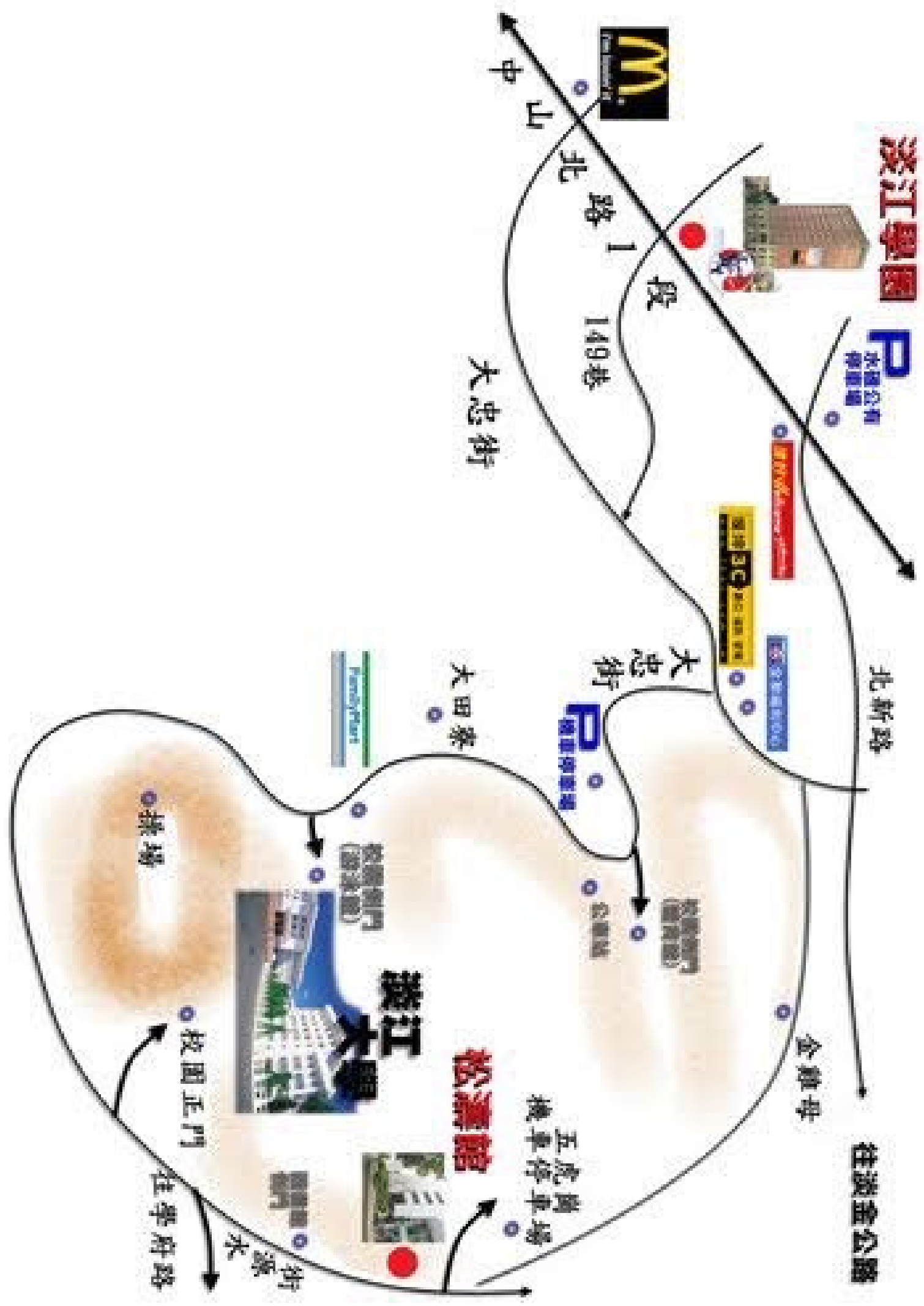
- 驚聲大樓10樓 T1006 Ching-sheng Memorial Hall, room T1106 (Ext.2002)
- 在校生出國學習相關事宜、交換生甄選  
Matters related to students studying abroad and selection of exchange students

### 境輔組 INTERNATIONAL STUDENTS GUIDANCE SECTION

- 驚聲大樓10樓 T1001 Ching-sheng Memorial Hall, room T1001 (Ext.2218)
- 僑生、外籍生、陸生及來校交換生輔導  
Guidance for overseas students, foreign students, land students and exchange students

1	警聲銅像廣場	Statue of Mr. Chang Ching-sheng	13	商管大樓(B)	Business and Management Building (B)	24	覺生紀念圖書館(U)	Chueh-sheng Memorial Library (U)
2	大門管制站	Main Entrance Guard House	14	海事博物館(M) 黑天鵝展示廳	Maritime Museum (M) Black Swan Exhibition Hall	25	覺生綜合大樓(I)	Chueh-sheng Memorial Hall (I)
3	紹謙紀念游泳館(N)	Shao-mo Memorial Natatorium Complex (N)	15	工學館(G)	Engineering Building (G)	25	覺生國際會議廳(10樓)	Chueh-sheng International Conference Hall (10th Fl.)
4	劉先紀念科學館(S)	Liu-hsien Memorial Science Hall (S)	16	工學大樓(E)	Main Engineering Building (E)	26	學生活動中心(R)	Student Activity Center (R)
5	鍾靈化學館(C)	Chung-ling Chemistry Hall (C)	17	教育學院(ED)	College of Education (ED)	27	教職員工停車場	Faculty Parking Lot
6	圖書館鐘靈分館	Chung-ling Library	18	松濤館(Z)	Sung-tao Hall (Z)	28	視聽教育館(V)	Audio-visual Education Building (V)
7	傳播館(Q)	Communication Hall (Q)	19	文誦藝術中心	Carrie Chang Fine Arts Center	29	行政大樓(A)	Administration Building (A)
8	傳播館(O)	Communication Hall (O)	20	外國語文大樓(FL)	College of Foreign Languages and Literatures (FL)	30	宮燈教室(H)	Chinese Palace-style Classrooms (H)
9	紹謙紀念體育館(SG)	Shao-mo Memorial Gymnasium (SG)	21	警聲紀念大樓(T)	Ching-sheng Memorial Hall (T)	31	覺軒花園	Chueh-hsuan Chinese Garden
10	麗澤國際學舍(J)	Reitaku International House (J)	21	警聲國際會議廳(3樓)	Ching-sheng International Conference Hall (3rd Fl.)	32	守謙國際會議中心(HC)	Hsu Shou-Chien International Conference Center(HC)
11	文學館(L)	College of Liberal Arts (L)	22	文誦音樂廳	Carrie Chang Music Hall	33	校史館暨張建邦創辦人紀念館(TH)	Gallery of Tankang History & The Founder Dr. Clement C. P. Chang's Memorial Hall(TH)
12	會文館(F)	Hwei-wen Hall (F)	23	學人宿舍	Faculty Residences		瀟苑	Ying Yuan House





淡江學園

P 水園公有停車場

北新路

往淡金公路

金雞母

ATM 全家便利商店

ATM 全家便利商店



北路 1

149巷

大忠街

大忠街

大田寮

P 機車停車場

公共廁所

校務大樓 (圖書館)

Family Plaza

校務大樓 (圖書館)

淡江大學

松濤館

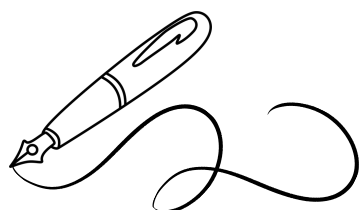
五虎停車場  
機車停車場

操場

校園正門

往學府路

水源街



# 行動APPS

## APPS YOU WILL NEED

目錄  
Contents

系所簡介  
About GPE

課程規劃  
Navigating Curriculum

大三出國  
Junior Abroad

行政資訊  
Student Resources

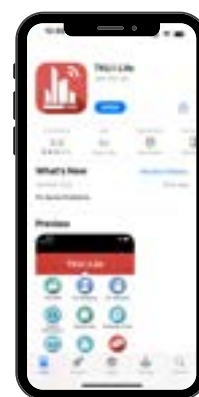


### 淡江 i 生活

- 支援 Android、iOS 作業系統
- 有12項主功能及48項次功能
- 學生可在應用程式中查詢**課表**、**考試小表**、**期中期末成績**、**行事曆**、**校園地圖**、**公車動態**、**建築物對照**、**五虎崗球場**、**連接淡江WiFi**等。

### Tamkang i Life

- Supported Android and iOS system
- 12 major and 47 minor features
- The top 10 favourite features by professors and students are **Course Schedule**, TKU Wifi, Examination Schedule, **Mid-term or Final Grades**, **Academic Calendar**, **Campus Map**, **Bus Info.**, Buildings' Code No., The Five-Tigers Hill Court, and etc.



中文版  
iOS



English Version  
iOS



中文版  
Android



English Version  
Android



### Tronclass 暢課 (iclass)

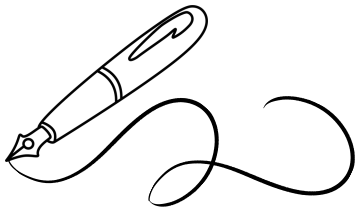
- 支援Android、iOS 作業系統
- 學生可於應用程式上查詢**課程教材**、**繳交作業**、**線上測驗**以及**點名管理**
- Supported Android and iOS system
- Featured by student's personal **courseware**/ uploading **homework**/**online test**/ **do roll-called**



iOS



Android



# 新生重要日程

## EVENTS FOR FRESHMAN

**Tuesday**

**8/29**

新生初選

Courses Enrollment

<https://www.ais.tku.edu.tw/ElcCos/login.aspx>

**Saturday**

**9/2**

家長座談會

Parent-Teacher Meeting

10:00~11:00 am 紹謨紀念體育館7樓

10:00~11:00 am meet at the 7th floor of the Shao-mo Memorial Gymnasium

11:00~12:30 pm 在T307 (驚聲大樓)

11:00~12:30 pm meet at T307 (Chingsheng Building)

**Thursday**

**9/7**

新生健康檢查

Freshmen Health Check

9:30~10:30 am 在活動中心(R)

9:30~10:30 am meet at the Activity center (R)

**Friday**

**9/8**

新生開學典禮 & 新生入學講習

Freshmen Opening Ceremony & Freshmen Orientation

7:40 a.m. 前於 淡水校園運動場 (下雨則在 紹謨紀念體育館7樓 集合)

Meet at the campus stadium before 7:40 a.m. (Meet at the 7th floor of the Shao-mo Memorial Gymnasium if it rains)

**Monday**

**9/11**

開始上課

First Day of School

**Monday**

**9/18**

加退選課程

Adding/Dropping Courses

Contents 目錄

About GPE 系所簡介

Navigating Curriculum 課程規劃

Junior Abroad 大三出國

Student Resources 行政資訊



淡江大學112學年度第1學期行事曆

(業經教育部112年7月14日臺教高(一)字第1120067803號函備查)

月份	週次	月曆							日期	事項
		一	二	三	四	五	六	日		
民國112年8月			1	2	3	4	5	6	1	本學期開始，新生初選第1學期課程(含研究所新生)【至8月7日】
									2	112學年度校教師評審委員會會議
			7	8	9	10	11	12	13	9 112學年度新任系所主管研習會【至8月10日】
									10	申請提修讀博士班截止
			14	15	16	17	18	19	20	15 網路查詢註冊【至9月28日】
			21	22	23	24	25	26	27	22 112學年度新進職員教育訓練
			28	29	30	31				29 學士班新生、轉學生新生、研究所新生選課【至8月31日】 30 招生委員會會議 31 112學年度新聘教師座談會
9月						1	2	3	1 學分學程證明書申請【至9月28日】	
									2 新生暨家長座談會，淡水校園學生宿舍住宿生報到、選住【至9月3日】	
			4	5	6	7	8	9	10	5 112學年度新聘教師教學工作坊、學生宿舍住宿新生講習 6 境外新生入學輔導講習會 11 11學年度第2學期期末考試請假補考(含進修學士班)【至9月8日】
									7	文、工、外語、教育、AI創智學院各系所克難坡巡禮、新生開學典禮及系務講習。理、商管、國際學院各系所健康檢查。出席人員：大學部、進學班及研究所新生。
									8	理、商管、國際學院各系所克難坡巡禮、新生開學典禮及系務講習。文、工、外語、教育、AI創智學院各系所新生健康檢查。出席人員：大學部、進學班及研究所新生。 學生繳費註冊截止日
		一	11	12	13	14	15	16	17	11 開始上課 15 招生委員會會議
										18 加選選課程【至9月26日】，補系、雙主修放棄修讀申請【至9月28日】， 品管團競賽活動申請【至9月28日】， 免修全民國防教育軍事訓練及護理課程申請【至9月22日】
		二	18	19	20	21	22	23	24	20 校慶工作籌備會議 22 第192次行政會議
		三	25	26	27	28	29	30	1	29 中秋節(放假一天)
		四	2	3	4	5	6	7	8	
		五	9	10	11	12	13	14	15	9 彈性放假一天(由教師自行擇期補課、112年11月4日補行上班) 10 國慶日(放假一天) 13 校園安全推選會議 18 校課程委員會會議 20 招生委員會會議 21 教學與行政革新研討會
10月	六	16	17	18	19	20	21	22	23	25 全學期上課達三分之一(休、退學學生退2/3學雜費截止)， 期中教學意見調查週【至11月5日】 25 教務會議 27 教育品質管理委員會 30 研究生學位考試申請【至12月8日】
	七	23	24	25	26	27	28	29	3	第90次校務會議(審議決草案) 4 校慶慶祝大會、校友返校日、補行上班(112年10月9日彈性放假) 6 期中考試週【至11月12日】 8 創校73週年紀念日 9 淡水校園教學大樓防空疏散暨地震避難推演 13 投報學分學程修讀名單【至12月8日】 15 112學年度校教師評審委員會會議 16 全校一、四、五年級班代表座談會 17 學生事務會議
	八	30	31							24 第193次行政會議
	九	6	7	8	9	10	11	12	4	全學期上課達三分之二(休、退學學生退1/3學雜費截止)， 期中退選課程【至12月8日】，研究生學位考試【至1月14日】
	十	13	14	15	16	17	18	19	13	招生委員會會議 18 教學評量週【至12月31日】 20 新聘教師員額分配會議 29 申請休學截止日，第194次行政會議(系所主管及學生代表列席)
	十一	20	21	22	23	24	25	26	2	1 開國紀念日(放假一天) 2 期末考試週【至1月8日】 3 全面品質管理教育訓練 8 網路查詢學期成績【至2月18日】
12月	十二	27	28	29	30	1	2	3	9 初選第2學期課程【至1月17日】，教師彈性教學週【至1月14日】 12 總務工作績效評估會議 13 選舉投票(放假一天)(112年7月14日新增) 15 寒假【至2月18日】(112年7月14日新增) 16 軍訓室年終工作檢討會、災害防救委員會會議【如與全國大專校長會議撞期則改為17日】 24 招生委員會會議	
	十三	4	5	6	7	8	9	10	15	寒假【至2月18日】(112年7月14日新增)
	十四	11	12	13	14	15	16	17	16	軍訓室年終工作檢討會、災害防救委員會會議【如與全國大專校長會議撞期則改為17日】
	十五	18	19	20	21	22	23	24	24	招生委員會會議
	十六	25	26	27	28	29	30	31	31	學期結束(1/31-2/15春節假期)
民國113年1月	十七	1	2	3	4	5	6	7		
	十八	8	9	10	11	12	13	14		
		15	16	17	18	19	20	21		
		22	23	24	25	26	27	28		
		29	30	31						

目錄

系所簡介

課程規劃

大三出國

行政資訊





淡江大學112學年度第2學期行事曆

月份	週次	月 曆							日期	事 項
		一	二	三	四	五	六	日		
民國 113年 2月					1	2	3	4	1	本學期開始
		5	6	7	8	9	10	11	9	除夕(02/08~02/14為國定春節假期)
		12	13	14	15	16	17	18	16	開始上班，學生繳費註冊截止日，第1學期成績複查截止日
	一	19	20	21	22	23	24	25	19	開始上課，網路查詢註冊【至3月8日】
									24	第1學期期末考試請假補考(含進修學士班)【至2月25日】
3月	二	26	27	28	29				26	加選選課程【至3月5日】，輔系、雙主修放棄修讀申請【至3月8日】，免修全民國防教育軍事訓練及護理課程申請【至2月29日】
						1	2	3	28	和平紀念日(放假一天)
									1	教育學程申請【至3月14日】
3月	三	4	5	6	7	8	9	10	8	113學年度轉系、所申請【至3月14日】，第195次行政會議
	四	11	12	13	14	15	16	17	13	品管圈競賽活動複審
									15	校園安全維護會議
	五	18	19	20	21	22	23	24	16	春之饗宴-系所及各校友會邀請校友返校座談午觀
									18	研究生學位考試申請【至5月10日】，期中教學意見調查週【至3月31日】
										20
									22	113學年度身心障礙學生升學大專校院甄試【至3月24日】
	六	25	26	27	28	29	30	31	29	全面品質管理研習會
4月	七	1	2	3	4	5	6	7	1	全學期上課達三分之一，教學行政觀摩日【至4月3日】
									4	兒童節、民族掃墓節連假【至4月7日】
	八	8	9	10	11	12	13	14	8	(休、退學學生退2/3學雜費截止)
									12	第196次行政會議(系所主管及學生代表列席)
	九	15	16	17	18	19	20	21	15	期中考試週【至4月21日】
									17	畢業典禮籌備會議
	十	22	23	24	25	26	27	28	22	擬報學分學程修讀名單【至5月17日】
									24	暫定招生委員會會議
									25	全校二、三年級班代表座談會
									26	教育品質管理委員會
									29	學雜費審議小組會議
十一			1	2	3	4	5	1	研究生學位考試【至7月7日】，學生事務會議	
								2	淡水校園教學大樓防空疏散暨地震避難檢核演練	
								3	校課程委員會會議	
十二	6	7	8	9	10	11	12	8	113學年度雙主修、輔系申請【至5月21日】，113學年度輔修申請【至5月21日】	
									第三週期校務評鑑自我評鑑實地訪評	
								10	教務會議	
								13	全學期上課達三分之二(休、退學學生退1/3學雜費截止)，期中選選課程【至5月17日】	
十三	13	14	15	16	17	18	19	15	113學年度校教師評審委員會會議	
								17	暫定大學申請入學第二階段指定項目甄試【至5月19日】，教育學程甄選決賽會議	
								20	教學評量週(畢業班科目)【至5月26日】	
十四	20	21	22	23	24	25	26	22	淡水校園防護團整編暨常年訓練，系所發展獎勵複審	
								24	應屆畢業生(含延修生)申請休學截止日，第197次行政會議(預算初審)	
十五	27	28	29	30	31	1	2	27	暫定招生委員會會議(視申請入學第二階段時程而定)，畢業班考試(學士班4年級、建築系5年級課程)【至6月2日】，畢業班學生網路查詢學期成績【至6月14日】，教學評量週(非畢業班科目)【至6月9日】	
								29	113學年度校教師評審委員會會議	
								31	總務會議、災害防救委員會第二次會議	
									學分學程說明書申請【至6月28日】	
									7	非應屆畢業生申請休學截止日，第91次校務會議(審議預算案)
十六	3	4	5	6	7	8	9	8	畢業典禮(補行上班，113年7月11日彈性放假)	
								10	端午節(放假一天)	
								11	期末考試週【至6月17日】	
								17	網路查詢學期成績【至7月31日】	
								18	教師彈性教學週【至6月23日】	
十七	10	11	12	13	14	15	16	22	淡水校園學生宿舍開辦作業【至6月23日】	
								24	暑假【至開學日】(112年7月14日新增)	
								25	113學年度淡江大學學生出國留學校務典禮	
								26	淡海同舟-113學年度社團負責人研習會【至6月30日】	
								28	招生委員會會議	
十八	17	18	19	20	21	22	23	1	行政人員暑假期間(週五休，7、8月輪休4天)【至8月31日】	
								8	彈性放假一天(113年6月8日補行上班)	
								15	(7/15~7/18全休)	
								22	第2學期成績複查截止日	
								30	招生委員會會議	
十九	24	25	26	27	28	29	30	30	招生委員會會議	
								31	本學年度結束	



# English Calendar:

First Semester, 2023	
Aug 1	First Semester Begins
Aug 1 ~ 7	First Semester course enrollment for undergraduates (Including 1st year graduate students)
Aug 2	2023~2024 Academic Year Faculty Evaluation Committee Meeting
Aug 9 ~ 10	2023~2024 Academic Year Seminar for New Department Supervisors
Aug 10	Application Deadline for the PhD. Program
Aug 15 ~ Sep 28	Enrollment information available online
Aug 22	2023~2024 Academic Year Incoming Staff Orientation
Aug 29 ~ 31	Courses enrollment for undergraduate freshmen, transfer students, and 1st year graduate students
Aug 30	Student Recruitment Committee Meeting
Aug 31	2023~2024 Academic Year Seminar for Incoming Faculty
Sep 1 ~ 28	Application period for "Certificate of Credit Programs"
Sep 2 ~ 3	New Student PTA Meeting Dormitory Check-in & Move-in on Tamsui Campus
Sep 5	2023~2024 Academic Year Teaching Workshop for Incoming Faculty Dormitory Students Orientation
Sep 6	Incoming Overseas Student Orientation





Sep 7	Freshmen Orientation and the Slope of Overcoming Difficulty Tour for all departments in College of Liberal Arts, Engineering, Foreign Languages and Literatures, Education, and Artificial Innovation Intelligence. Medical check-ups for all departments in College of Science, Business and Management, and International Affairs. Participants: undergraduates, graduates, extension education, transfers.
Sep 7 ~ 8	Make-up final exams for the Second Semester of 2022~2023 Academic Year (Including classes from the bachelor program of extension education)
Sep 8	Freshmen Orientation and the Slope of Overcoming Difficulty Tour for all departments in College of Science, Business and Management, International Affairs. Medical check-ups for all departments in College of Liberal Arts, Engineering, Foreign Languages and Literatures, Education and Artificial Innovation Intelligence. Participants: undergraduates, graduates, extension education, transfers. Deadline for registration and payment
Sep 11	Class Begins
Sep 15	Student Recruitment Committee Meeting
Sep 18 ~ 22	Application to waive "National Defense Military Training / Nursing Courses"
Sep 18 ~ 26	Drop/Add week
Sep 18 ~ 28	Application to drop Minor/ Double Major Curriculum (till Sep 28) Application for the Tamkang University Quality Award Competition (till Sep 28)
Sep 20	TKU Anniversary Celebration Preparation Meeting
Sep 22	The 192th Administrative Meeting
Sep 29	Mid-Autumn Festival (No class)
Oct 9	Make-up Holiday (No Class)
Oct 10	National Day of the Republic of China (No class)
Oct 13	Campus Security Maintenance Meeting
Oct 18	Curriculum Committee Meeting
Oct 20	Student Recruitment Committee Meeting
Oct 21	Teaching and Administration Innovation Seminar
Oct 23	Completion of 1/3 of the semester (Deadline to apply for 2/3 of refunds on tuition payment for deferred and discontinued study)
Oct 23 ~ Nov 5	Midterm Teaching Performance Evaluation Week (till Nov 5)
Oct 25	Academic Affairs Meeting
Oct 27	Educational Quality Management Meeting
Oct 30 ~ Dec 8	Application for Graduate Degree Exams
Nov 3	The 90th School Affairs Meeting (Final Account Review)
Nov 4	TKU Anniversary Celebration, Alumni Homecoming Day, Make-up Workday (Adjusted Holiday on Oct 9)
Nov 6 ~ 12	Midterm Exams Week
Nov 8	TKU 73rd Anniversary
Nov 9	Earthquake evacuation drills and promotions of disaster prevention activities at teaching building on Tamsui Campus
Nov 13 ~ Dec 8	Roster submission for students who have elected in the credited curriculum
Nov 15	2023~2024 Academic Year Faculty Evaluation Committee Meeting
Nov 16	Representative Symposium for the 1st, 4th, and 5th-Grade Classes
Nov 17	Student Affairs Meeting
Nov 24	The 193rd Administrative Meeting
Dec 4	Completion of 2/3 of the semester (Deadline to apply for 1/3 of refunds on tuition payment for deferred and discontinue study)



Dec 4 ~ 8	Midterm course-drop period
Dec 4 ~ Jan 14, 2024	Graduate degree examinations
Dec 13	Student Recruitment Committee Meeting
Dec 18 ~ 31	Teaching Evaluation Week
Dec 20	Meeting on Allocation of New Faculty Positions
Dec 29	Application deadline for deferred study The 194th Administrative Meeting (Participants:supervisors of all departments and student representatives)
Jan 1, 2024	Founding Day of the Republic of China (No class)
Jan 2 ~ 8	Final Exams Week
Jan 3	Total Quality Management Training
Jan 8 ~ 14	Flexible Teaching Week for Faculty
Jan 8 ~ Feb 18	Final Grades of First Semester Available Online
Jan 9 ~ 17	Preliminary course enrollment period for second semester
Jan 12	General Affairs Performance Evaluation Meeting
Jan 16	Military Training Office year-end performance review & Disaster Rescue and Prevention Committee Meeting (Move to the 17th when conflicting with the Taiwan's President of University/College Meeting)
Jan 24	Student Recruitment Committee Meeting
Jan 31	First Semester Ends (Chinese New Year Holiday from Jan 31 till Feb 15)
<b>Second Semester, 2024</b>	
Feb 1	Second Semester Begins
Feb 9	Chinese New Year's Eve (Feb 8 till Feb 14 national Chinese New Year Holiday)
Feb 16	Staff & faculty resume work Deadline for registration and payment Deadline for the review of the first-semester grades
Feb 19	Class Begins
Feb 19 ~ Mar 8	Enrollment information available online
Feb 24 ~ 25	Make-up final exams for the First Semester of 2023~2024 Academic Year (Including classes from the bachelor program of extension education)
Feb 26 ~ Mar 5	Add/Drop Week
Feb 26 ~ 29	Application to waive "National Defense Military Training/Nursing Courses"
Feb 26 ~ Mar 8	Application to drop Minor, Double Major Curriculum
Feb 28	Peace Memorial Day (No class)
Mar 1 ~ 14	Application Period for Teacher Education Program
Mar 8 ~ 14	Application period to transfer major/department for the 2024~2025 Academic Year
Mar 8	The 195th Administrative Meeting
Mar 13	Final review of Tamkang University Quality Award Competition
Mar 15	Campus Security Maintenance Meeting
Mar 16	Spring Festival - Alumni Association of departments, graduate institutes and the university invite alumni for homecoming activities
Mar 18 ~ May 10	Application Period for the Graduate Degree Exams
Mar 18 ~ 31	Midterm Teaching Performance Evaluation Week



Mar 20	Students Recruitment Committee Meeting
Mar 22 ~ 24	2024~2025 Academic Year College Entrance Interviews for Applicants with Disabilities
Mar 29	Total Quality Management Seminar
Apr 1	Completion of 1/3 of the semester
Apr 1 ~ 3	Teaching administration observation period
Apr 4 ~ 7	Children's Day, Tomb Sweeping Day (No class)
Apr 8	Deadline to apply for 2/3 of refunds on tuition payment for deferred and discontinued study
Apr 12	The 196th Administrative Meeting (Participants: supervisors of all departments and student representatives)
Apr 15 ~ 21	Midterm Exams Week
Apr 17	Commencement Preparation Meeting
Apr 22 ~ May 17	Roster submission for students who have elected in credited curriculum
Apr 24	Provisional Students Recruitment Committee Meeting
Apr 25	Representative Symposium for the 2nd, and 3rd-Grade Classes
Apr 26	Educational Quality Management Meeting
Apr 29	Tuition and Fees Deliberation Committee Meeting
May 1	Student Affairs Meeting
May 1 ~ Jul 7	Graduate Degree Examinations
May 2	Earthquake Evacuation Drills and Disaster Prevention Activities for Teaching Buildings on Tamsui Campus
May 3	Curriculum Committee Meeting
May 8	On-site Visit for the 3rd Cycle of University Recognition of Self-Accreditation
May 8 ~ 21	Application for Double Major/Minor Curriculum for the 2024~2025 Academic Year Application for Specific Minor
May 10	Academic Affairs Meeting
May 13	Completion of 2/3 of the semester (Deadline to apply for 1/3 of refunds on tuition payment for defer and discontinue study)
May 13 ~17	Midterm course-drop period
May 15	Faculty Evaluation Committee Meeting for the 2024~2025 Academic Year
May 17	Final selection of candidates for Teacher Education Program
May 17 ~ 19	Provisional Second-stage Interview of College Entrance Application
May 20 ~ 26	Teaching Performance Evaluation Week (Subjects offered to graduating students)
May 22	Organizing and training of the Protection/Rescue Team of Tamsui Campus Final Review of the Department Development Award
May 24	Graduating seniors' application deadline for deferred study (Including students with extended study) The 197th Administrative Meeting (Preliminary budget review)
May 27	Provisional Student Recruitment Committee Meeting (set by the date of the second stage application)
May 27 ~ Jun 2	Examinations for graduating seniors (Undergraduates and Five-Year Architecture Program)
May 27 ~ Jun 9	Teaching Performance Evaluation Week (Subjects offered to non-graduating students)
May 27 ~ Jun 14	Final grades of graduating seniors available online
May 29	Faculty Evaluation Committee Meeting for the 2024~2025Academic Year
May 31	General Affairs Meeting & 2nd Meeting of the Disaster Rescue and Prevention Committee
Jun 3 ~ 28	Application period for credited curriculum certificates



Jun 7	Deadline to apply for deferring or discontinuing study (non-graduating students) The 91st School Affairs Meeting (Budget Review)
Jun 8	TKU Commencement Ceremony, Make-up Workday (Adjusted Holiday on Jul 11)
Jun 10	Dragon Boat Festival (No class)
Jun 11 ~ 17	Final Exams Week
Jun 17 ~ 23	Flexible Teaching Week for Faculty
Jun 17 ~ Jul 31	Final grades of second semester available online
Jun 22 ~ 23	Dormitory Closure Operation on Tamsui Campus
Jun 25	TKU Flag Awarding Ceremony for Students Going Abroad for Study in 2024~2025 Academic Year
Jun 26 ~ 30	The Symposium of Leaders in Students' Association of TKU - The 2024~2025 Academic Year Association's leader seminar
Jul 28	Student Recruitment Committee Meeting
Jul 1 ~ Aug 31	Summer Vacation (All Fridays Off, 4 days of rotational off for staff)
Jul 11	Adjusted Holiday (Make-up Workday on Jun 8)
Jul 15	(Jul 15~Jul 18 Off)
Jul 22	Deadline for the review of the second-semester grades
Jul 30	Student Recruitment Committee Meeting
Jul 31	Second Semester Ends



必修科目表 Required courses chart :

[http://www.gpe.tku.edu.tw/zh\\_tw/Curriculum/course/foroldstudents](http://www.gpe.tku.edu.tw/zh_tw/Curriculum/course/foroldstudents)

課程查詢系統 Course Catalog : <https://azquery.tku.edu.tw/acad/>

選課系統 Curriculum online system : <https://www.ais.tku.edu.tw/ElCos/login.aspx>

通識選填 Register core curriculum : [https://www.ais.tku.edu.tw/COS\\_LOT](https://www.ais.tku.edu.tw/COS_LOT)

校務行政查詢系統 School administration system: <http://sinfo.ais.tku.edu.tw/emis/>

請假系統網站 Leave application system : <https://leave.sis.tku.edu.tw>

社團學習與實作系統 Learning & practice of clubs system : [https://lpcs.tku.edu.tw/LPCS/fc\\_news/fc\\_news\\_all.aspx?mode=none](https://lpcs.tku.edu.tw/LPCS/fc_news/fc_news_all.aspx?mode=none)

交換生計畫網站查詢 Exchange students program: [http://www.oieie.tku.edu.tw/zh\\_tw/students/learning1/plane1](http://www.oieie.tku.edu.tw/zh_tw/students/learning1/plane1)

English Information Website- Study in TKU: <http://english.tku.edu.tw/StudyinTKU.asp>